

Quick Composing Tourney

61st WCCC, Ohrid, 2. September 2018

Mate in 2 moves

Thematic condition: *Accumulative liberation*

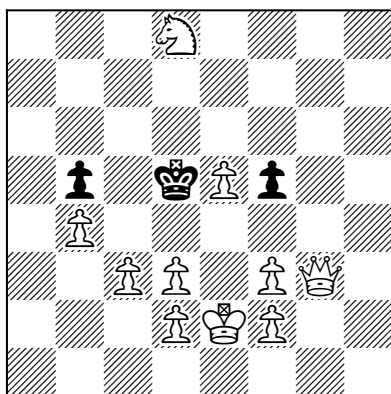
In the diagram position (the first twin), a white thematic piece **A** guards a flight-square **X** around **bK**, or pins a black piece **B**. The key gives flight **X** or unpins the piece **B**. The second twin is created by removing white piece **A** from the board. Then, the key-move of 2nd twin gives another square **Y** to **bK**, or unpins another black piece **C**.

The weaknesses made by key-moves of the twins may be of the same kind (unguard-unguard or unpin-unpin) or of different kinds (unguard-unpin or unpin-unguard).

Multiple twins and multiple thematic effects are allowed. No fairy pieces or conditions. Time for composing: 3 hours.

The tourney is open for Congress participants only. Each composer may enter at most 2 entries (individual or joint).

Ex1: **Scheme**



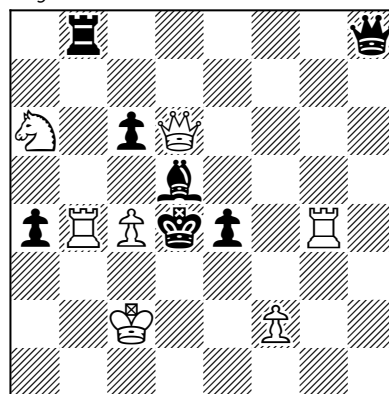
#2 b) -wPd3

a) 1.**d4!** threat: 2.Qg8#

b) 1.**f4!** threat: 2.Qd3#
1...Ke4 2.Qf3#
1...Kc4 2.Qg8#

Ex2: **Marjan Kovačević**

Original for the 61st WCCC Bulletin 2018



#2 b) -wRg4

setplay: 1...Qh3 2.Qxf6#

a) 1.**Rg5!** threat: 2.Qc5#, 1...e3 2.Rg4#
1...Qf8 2.Qe5#, 1...Rb5 2.cxb5#
1.**Qg3?** threat: 2.Qc3#, but: 1...Qh3!

b) 1.**Qg3!** threat: 2.Qc3#
1...Bxc4 2.Qd6#, 1...e3 2.Qxe3#
1...Qh3 2.Qg7#

Example 1: wPd3 = thematic piece A, c4 = thematic square X, e4 = thematic square Y.

Example 2: wRg4 = thematic piece A, bPe4 = thematic piece B, bBd5 = thematic piece C.

Judge: Marjan Kovačević