

Quick Composing Tourney

61st WCCC, Ohrid, 2. September 2018

Helpmate in 2 moves

Thematic condition: *Replaced actor*

A black thematic **piece A** could arrive to the thematic **square X** in the 1st move, but this try would create a weakness and prevent the intended mate. This is why another black **piece B** arrives to the thematic **square X** in the 2nd move.

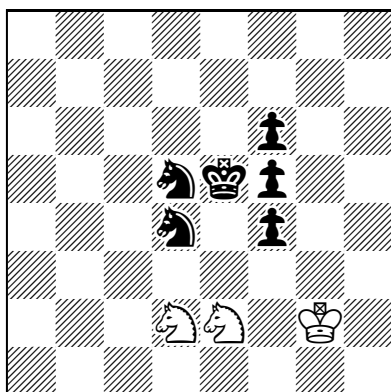
The weakness made by try-move of the piece A may be any: unblock, opening of black line, no tempo for White or Black, check to WK, etc.

Thematic piece B could play both moves, or not. What matters is that it comes to the square X with the same reason as the piece A.

Multiple solutions, twins and set-play allowed. No fairy pieces or conditions. Time for composing: 3 hours.

The tourney is open for Congress participants only. Each composer may enter at most 2 entries (individual or joint).

Ex1: **Scheme**

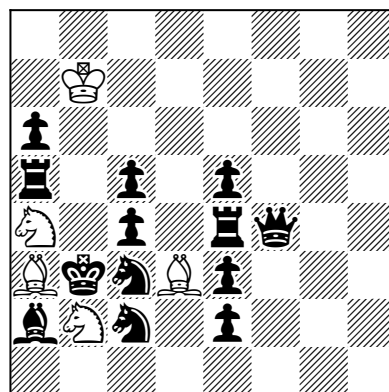


h#2

1. **Se6?** Kf3 2. ?? Sc4#
1.Sc7! Sc3 2. **Sce6** Sc4#

Ex2: **Borislav Gadjanski**

c. The Macedonian Problemist 2005-06



h#2 2.1.1.1

1. **Sb5** Sxc4? 2. ~ Sxc5#? 3. Kc3
1.Sd4 Sxc4! 2. **Sdb5** Sxc5#
1. **Sd4** Bxc5? 2. ~ Bxc4#? 3. Kc2
1.Sb5 Bxc5! 2. **Sbd4** Bxc4#

In the Example 1, thematic square is e6, and thematic pieces are Sd4 (A) and Sd5 (B). The thematic weakness is – *no tempo for Black*.

In the Example 2 thematic, pieces Sc3 & Sc2 exchange their functions around the thematic squares b5 & d4. The thematic weakness is the same – *unblock*.

Judge: Borislav Gadjanski